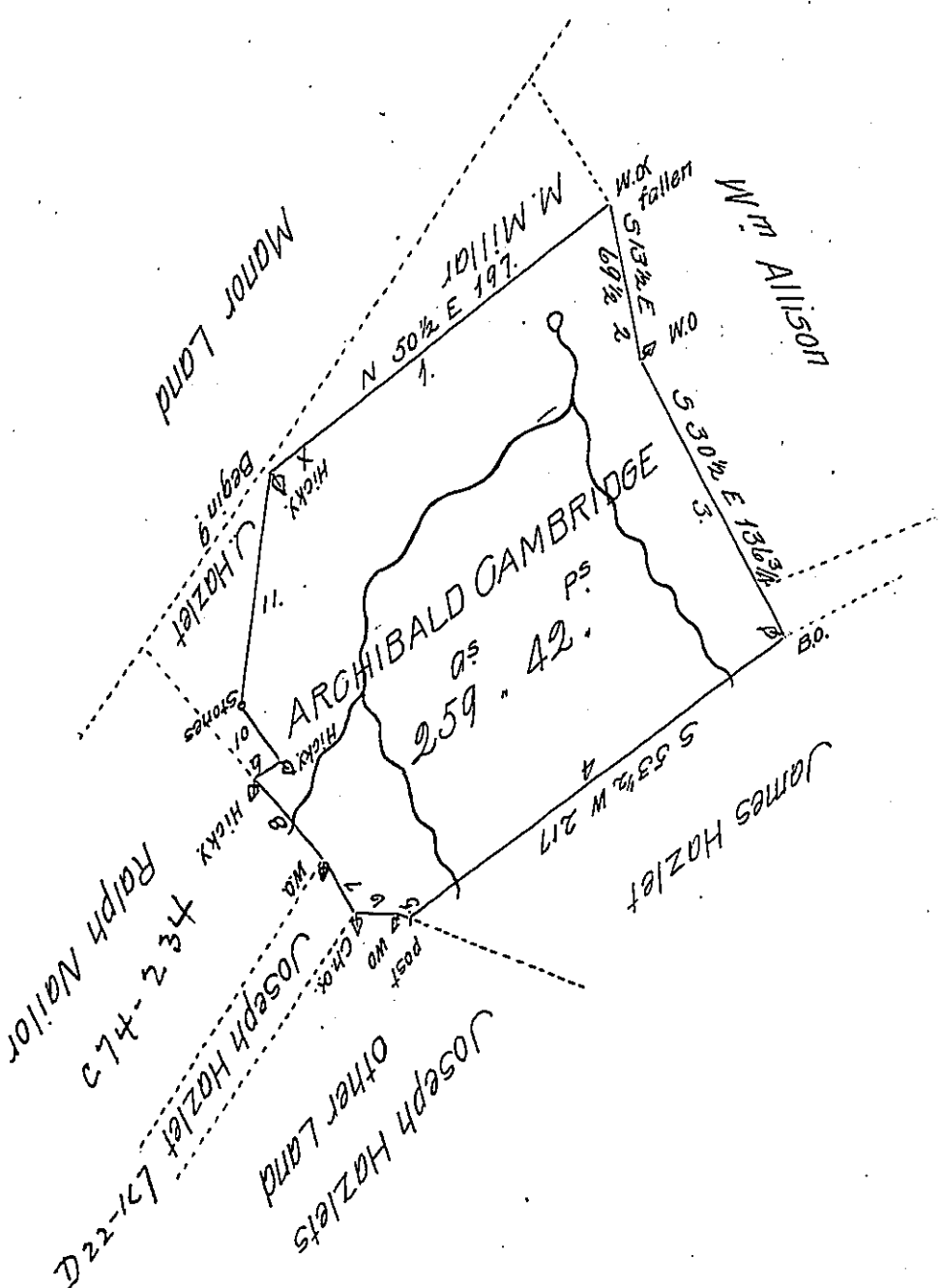


Course & Distance  
Beginning at a HickY

1 N 50 1/2 E	197	40 fallen
2 S 13 1/2 E	69 1/2	WO.
3 S 30 1/2 E	136 3/4	BO.
4 S 53 1/2 W	217	past
5 N 72 W	3 1/2	WO.
6 S 89 W	17 1/2	Ches <sup>rs</sup>
7 N 30 W	26	WO.
8 N 44 1/2 W	44 1/3	HickY
9 N 43 E	10 2/3	HickY
10 N 36 W	28	Stones
11 N 6 E	104 1/2	HickY

The place of  
Beginning



A Draught of a tract of land Situate in Union Township Mifflin County Containing Two hundred & fifty nine Acres and 42 perches and the allowance of Six Per Cent for roads &c Survey'd April the 18th 1803. In pursuance of an Order of Survy Granted To Archibald Cambridge the 22<sup>d</sup> day of Sep<sup>r</sup> 1766. N<sup>o</sup> 1330.

P- William Harris D.S.

To Samuel Cochran Esquire }  
Surv<sup>r</sup> Gen<sup>l</sup> of Pennsylvania }

IN TESTIMONY that the above is a copy of the original remaining on file in the Department of Internal Affairs of Pennsylvania, made conformably to an Act of Assembly approved the 16th day of February, 1833, I have hereunto set my Hand and caused the Seal of said Department to be affixed at Harrisburg, this fifteenth day of February 1905.

*Joseph B. Brown*  
Secretary of Internal Affairs